

## ASI DataMyte 4000: The Ideal Multipurpose Data Collector

### Key Features

- Ultra-Rugged Industrial Construction
- User-Friendly Windows Interface
- Long Battery Life

What's your concept of an ideal data collection device? Does it need to be mobile? How about rugged? Friendly to use? Can it do more than one job to eliminate multiple platforms? How will it increase productivity? Most of all, what will it do for your bottom line?

The ASI DataMyte 4000 meets all of these criteria and more. Designed with the user in mind, it can function in a variety of applications – variable data collection, attribute data collection, audit applications, and SPC charting are all possible. It's ideal for tasks ranging from weld audits to yard audits, from torque measurement to paint thickness analysis.



### Mobile

Designed from the outset to be a truly portable device, the 4000 weighs under four pounds and has an eight-hour battery life – ideal for most work shifts. It uses the Windows CE operating system, and offers wireless communications that let you send and receive information from anywhere on a wireless network. The 4000 is an open communications platform with multiple connectivity options, including an optional 802.11b radio card. Standard features include an IrDA port, three RS-232 ports, and two USB ports.

### Rugged

The industrially-hardened 4000 includes a lightweight magnesium case bonded to a rubber-like Alcryn shell. Engineered to resist damage from bumps and drops, it's also designed to be splash resistant and can operate in temperatures well above 100 degrees Fahrenheit.

### Friendly

The familiar Windows operating system minimizes training time and keeps the operator interface simple. With the 4000's exceptional graphic capabilities, you can display digital photos or drawings to aid in data collection tasks. Graphics can be combined with menus and checklists to simplify operation and reduce errors.

## Multipurpose

With the 4000, one platform does it all. The basic Model 4030 interfaces with a wide variety of digital and analog devices. It can collect data in a wireless or batch mode. It can run thin client applications, such as ASI DataMyte Inspect attribute software, or embedded applications, such as ASI DataMyte Auditor and DigiForm. The Auditor version, Model 4060, interfaces with ASI DataMyte Quantum SPC or TranSend software for on-line charting and data analysis.

## Productive

The 4000 delivers all the information necessary for workers to accomplish their jobs at the point of production in a highly efficient way. With its large LCD screen and enhanced graphics capability, the 4000 gives immediate feedback that's easy to see and understand.

## Profitable

With the 4000, you'll realize the benefits of reduced process time, decreased paperwork and improved quality. In a typical application, the 4000 can pay for itself in six months or less. The bottom line: **quick return on investment and increased profitability.**

*Keep reading for more information on specific applications of Model 4000 configurations.*

Type 6 Engine

**Inspection Point 327a**

Header Bolt

(C2)  
High : 1.40000      Low : 0.80000      Nom.: 1.00000  
Source : TQ100

Subgroup: 1      Read

Insp. Point 327b - Clearance Check	1	● 0.22000
Insp. Point 327a - Header Bolt: turn clockwise with 67.8 NM wrench with 4 inch crows foot	1	
Insp. Point 327c - Burr Check	1	

*A typical Auditor data collection screen with large, easy to follow graphic aids.*

## Auditor Applications

The Auditor simplifies complex measurement and assembly tasks with the use of photos or drawings at each step, turning these complicated tasks into simple “follow the pictures” procedures. Significant reductions in training time and in operator errors have been reported.

The Auditor can use work plans created in ASI DataMyte Quantum SPC software, TranSend software, and other third party packages. Data residing in the Auditor can also be uploaded to any of these programs, and gage inputs can be configured on a per-user or per-job basis. The Auditor's graphical user interface simplifies training and reduces operator error, benefits that are especially important in times of high employee turnover, a multilingual work force and complex, multi-step tasks.

The Auditor is ideal for variables data collection, with analog interfaces to gap and flush gages and torque transducers. Serial gage interfaces can be used with gages such as calipers, micrometers and barcode wands.

With the optional torque module, the Auditor is ideal for torque data collection routines, either in dynamic or static applications. One of four different algorithms -- breakaway, restart, peak, and set -- may be used to

convert a torque transducer's analog signal to a digital value that represents the force applied. The Auditor's LCD panel displays a torque curve plot for the joint being measured. A built-in algorithm selects the desired point or a unique “Pick-a-Point” feature lets you select any point from the curve as the data value.

## DigiForm Applications

With the addition of the ASI DataMyte DigiForm software package to either Model 4030 or Model 4060, you can create customized data collection forms using Visual CE Forms Designer software. The large color display, an intuitive user interface, and drag-and-drop capability make it easy to design and view complex forms.

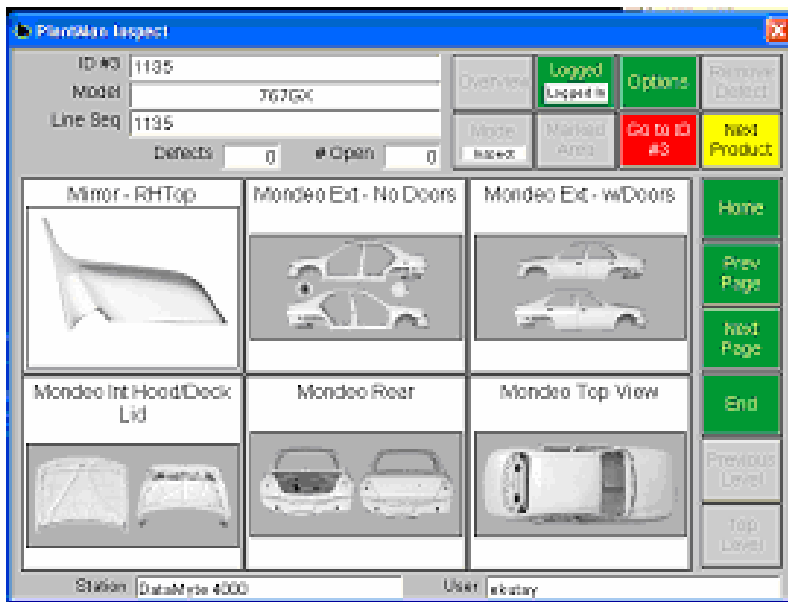
The DigiForm option is designed for use across multiple industries, including manufacturing, retail, healthcare, heavy construction, public utilities, public safety, shipping, military and transportation. Applications are limited only by the user's imagination, and include inspection, auditing, medical records, on-site documentation and many more.

Designed to provide significant time and cost savings through elimination of paperwork and streamlining of the workflow process, the DigiForm package also provides productivity gains and a quick return on investment for the user.

## Inspect Software

You can run ASI DataMyte Inspect attribute data collection software as a thin client application on either the Model 4030 or the Model 4060 platform.

Inspect is designed to reduce the costs associated with scrap, rework, warranty claims, and production bottlenecks. It's a valuable tool for collecting, analyzing and reporting defect-related data in applications where part and assembly defect information is critical to the production of quality parts.



*Inspect features multiple on-screen graphics*

Collected data is stored in a SQL database, available for quick access from any web browser via reporting software. Inspect also includes a wide range of defect reporting tools and an interface to e-mail, paging and other electronic notification tools.

Specifications for the ASI DataMyte 4000 follow. To find out even more, and to contact your nearest ASI DataMyte representative, visit our website at [www.asidatamyte.com](http://www.asidatamyte.com), or call toll-free at 1-800-455-4359.



*Form designed with DigiForm*

One of Inspect's principal strengths is its easy-to-use operator interface. Inspect software displays digital images of the part or assembly to be inspected and uses simple touch screen tools to identify and evaluate defects.

With the 4000's optional radio frequency card, you can send and receive information from anywhere on a wireless network. This provides the ideal mobile solution for remote plant floor inspections or yard audits. Typical applications are in automotive and heavy truck assembly and in part stamping and painting applications.

Collected data is stored in a SQL database, available for quick access from any web

## **ASI DataMyte Model 4000 Specifications**

### **PROCESSOR**

Hitachi SH-4 (SH-7750)

### **MEMORY**

32 MB Flash memory  
32 MB SDRAM

### **OPERATING SYSTEM**

Microsoft Windows CE3.0

### **DISPLAY**

7.7 in. resistive touch screen  
640 x 480 with 256 colors  
Portrait and landscape orientation

### **COMMUNICATIONS**

3 RS-232 serial ports  
2 universal serial bus ports (USB host)

### **ENCLOSURE**

Case: Cast Magnesium, bonded Alcryn® shell  
Weight: Less than 4 lbs.  
Dimensions: 8.4" X 11" X 2" (22 cm X 28 cm X 5 cm)

### **POWER**

AC: 100-240 VAC, 50/60 Hz  
DC: 12-16 VDC with appropriate adapter  
Battery: Lithium-Ion, 3100-3300 MAh,  
8-hour operation

### **ENVIRONMENTAL**

Operating Temp: 0 - 45 degrees C (32 - 113 degrees F)  
Storage Temp: -20 - 60 degrees C (-68 - 140 degrees F)  
Humidity: 5 - 90% relative humidity, non condensing  
Moisture: Splash resistant

### **APPROVALS**

Emissions: FCC Part 15 Subpart B, Class A  
EN 50081-2 Class A (CE)  
Immunity (EMC): EN 50082-2  
Safety: UL 60950, CSA 22.2 No. 950  
EN 60950-OC, IEC 60950

### **OPTIONS**

RF 802.11b radio card\*  
LMI-compatible analog board  
Torque board

\*Cisco North American or European version.

Specifications subject to change without notice.  
All company and product names are the trademarks  
of the respective companies.



**Total Quality Solutions**

[www.asidatamyte.com](http://www.asidatamyte.com) • Plymouth, MN • Phone: 763.553.1040 • Fax: 763.553.1041  
Royal Oak, MI • Phone: 248.543.6040 • Fax: 248.543.2882  
Hasselt, Belgium • Phone: 32.11.870.830 Fax: 32.11.870.833  
Copyright 2003, ASI DataMyte, Inc.